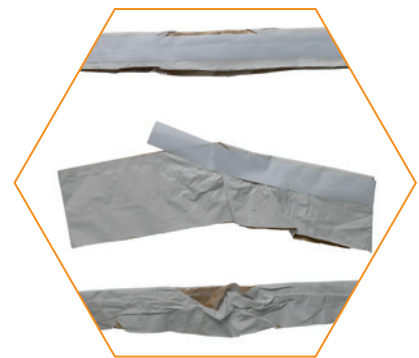
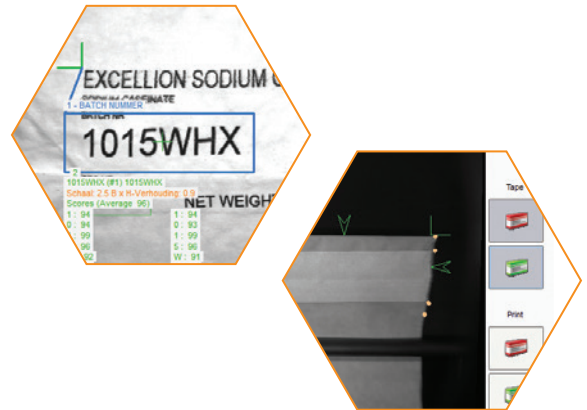


Guarantee food safety and minimize downtime.
No unnecessary production stop due to bad seals or bad printing.

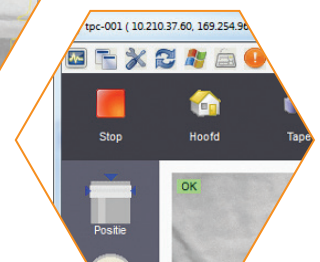
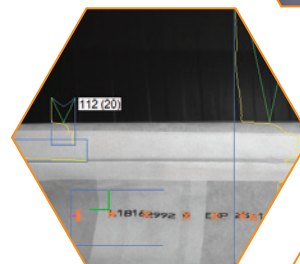


Tape Print Checker

Food safety is key in the food market. 100% Reliability is important. Also when it concerns packing large quantities of powders in bags (milk powder, baby powder etc). Any product that leaves the factory must be 100% well packed and provided with codes that can be read and stored in a database with image and text.

The TapePrintChecker (TPC) arranges this for you. The presence of the tape is being verified and checked whether it is applied over the full length, without creases, and if it is neatly in line with the packaging itself. A well taped bag prevents mess in the line, during transport and also prevents claims from customers.

In addition to the tape, the TPC checks all desired prints in the same instant like: batch code, lot code, product code, BBD, logo etc. This data can be saved, linked to the taken image, so any unique product can be searched for easily.



Avoid unnecessary production stops with poor seals and reduce downtime.



About the system

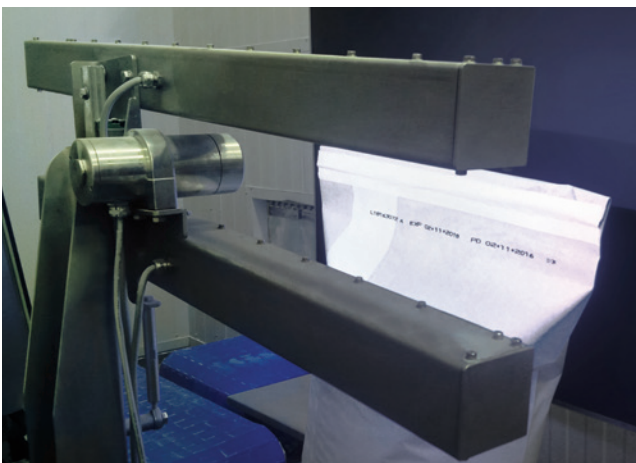
- ▶ No downtime for packaging machine
- ▶ In-line control system does not adversely affect the capacity of the line
- ▶ 100% product inspection
- ▶ Monitor integrated in filling machine
- ▶ System reliability (read-out + analysis) is 99,9%
- ▶ The system can be operated from the console in the filling machine and from the operating room

Control of: the tape

- ▶ The overall accuracy of in-line tape control is 95%
- ▶ Detection of incomplete tape
- ▶ Detection of cracks in tape
- ▶ Detection of incorrect position tape

Control of: all printed information

- ▶ With an overall accuracy of 99,9% (read-out + analysis)
- ▶ TPC reads and checks:
 - Product group
 - Legal name
 - Lot / batch code
 - Sequence
 - Production date
 - Expiration date
 - Weight
 - Image recognition of logos or specific texts like halal / kosher
- ▶ Database retrievable
- ▶ Verification if 'read back batch code' matches with 'printed batch code'



In a split second the TPC checks the tape and print on:

- ▶ Presence
- ▶ Location
- ▶ Orientation
- ▶ Completeness
- ▶ Readability of all printed info
- ▶ Traceability of all stored data

