

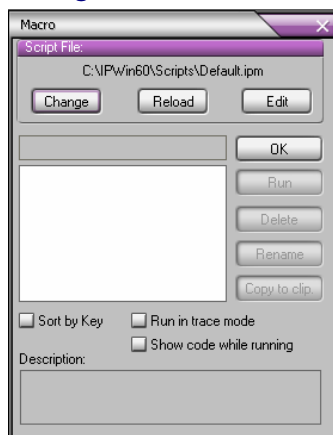
Loading a Macro

General Macro Notes

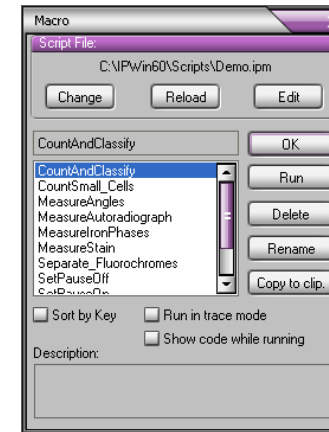
- Macros are supported in **Image-Pro Plus** and **Analyzer** products only.
- Macro are held in script files which are given the extension ***.ipm** (*.scr for IPP version 4.5X and lower)
- When recording macros record them into a file called **default.scr**
- Example macros can be found in the **Scripts** folder of Image-Pro's directory.
- Further examples can be found on our **Solution Zone** on our website

Loading a Macro

1. Open **Image-Pro Plus** and select **Macro** from the **Macro** file menu to load the Macro dialog box shown below.



2. Select **Change** and browse to the desired script file – now you will be able to view all macros in that file



3. Highlight the macro to be executed and select **Run**.

Macros in the script files are now also listed under the Macro file menu and can be executed by selection here.