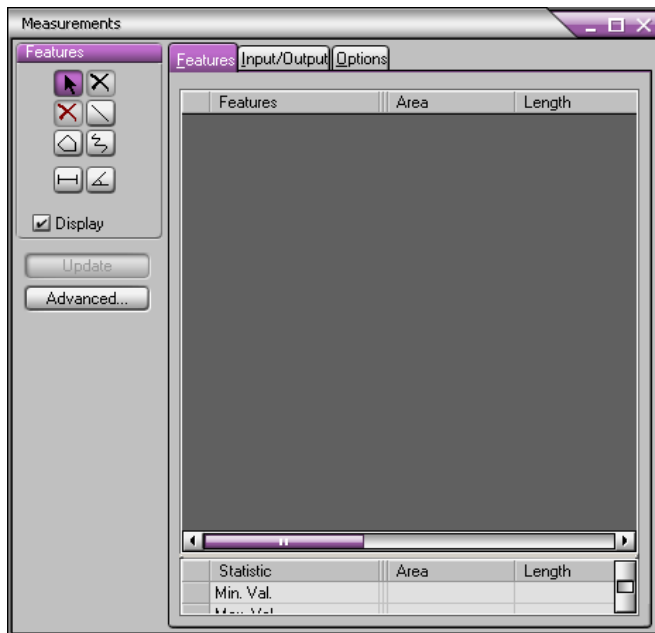







1. Select **Measure/ Measurements...** This will open the dialog below – (if the window does not look like the one below, Left-Click on **Basic** to use basic measurements tools)



Use the following tools to obtain these measurements:

Icon	Tool	Measurements
	Straight Line	Start point, End Point, Length, Angle
	Polygon	Perimeter, Area
	Trace	Length of non-linear feature
	Distance	Distance between two individual features
	Angle	Angle between two linear measurements

Notes

- ⊗ Measurements will be made in pixels unless a specific calibration setting is applied.
- ⊗ Statistical data for the measurements appears at the bottom of the Measurement data window.
- ⊗ Measurement data and statistics can be exported using the **Input/Output** tab

2. Select the appropriate tool and measure the feature of interest. All measurement data will appear in the window.