

Your partner in vision



www.machinevision.nl

Seal Inspector

In today's world where customers are getting more and more demanding, quality control is becoming essential in delivering a product that will look perfect towards the customer. With sealed products it has an added dimension, as material that is left in between the seal not only looks bad, it can also compromise the storage life because the seal may not be airtight anymore.

The Seal Inspector will take care of all your troubles. It checks the seal for intrusion of foreign material and residual material from cutting. But it doesn't stop with the seal! It will also check if the expiration date has been printed or any special labels are present.

Since 2004, DVC supplied the Dutch market with several first generation Seal Inspector systems. These inspectors have been inspecting 140 packages a minute 24 hours a day during the last 3 years. The seals of these packages are transparent but of different manufacturing process.

In March 2008 DVC will introduce the second generation seal inspector with new features which allows inspection of limited printed seals.

The Seal Inspector can check the following

- Seal
- Presence of expiration date
- Label(s)
- Shape
- Forming
- Presence of barcode

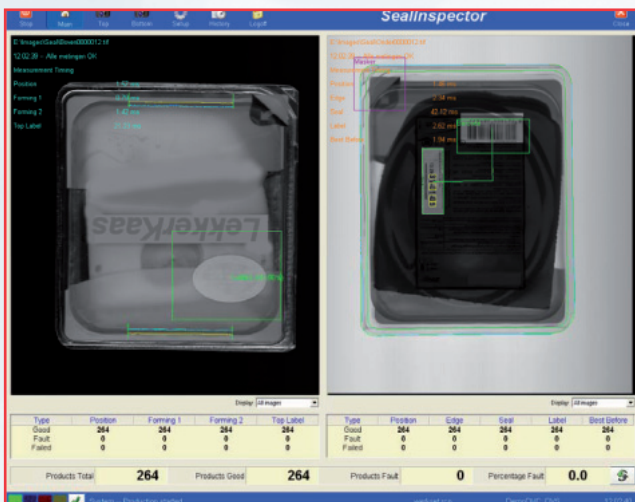
Specifications

- 100% inspection of the product
- Non-contact inspection
- Up to 140 sealed packages per minute
- Minimal detectable defects 1 mm²
- Two-sided inspection of label and seal
- The sum of false acceptances and rejects is 1% of the production volume.
- Option Stainless steel version



Your partner in vision

Seal Inspector



Features

- Easy installation at existing lines. Equipment needs 60cm space
- Height of the belt is 85cm
- Inspection settings adjustable during production
- Possibility to view all images or only rejects per measurement
- Possibility to review selected images
- Try-out settings using review or production images
- Remote access by VPN
- Access control on various user definable levels
- Recipes (set of parameters) can be stored and retrieved easily

Explanation of User Interface

- Control buttons at the top of the screen
- Left is Top view of product
- Right is Bottom view of product
- The measurement areas are indicated by rectangles and regions of interest (these can be switched off)
- Statistical information at the bottom of the screen

Benefits

- 100% inspected products
- Non-contact inspection
- Historical production information
- No return of products
- Customer satisfaction

www.machinevision.nl

DVC machinevision B.V

Voorerf 6, 4824 GN Breda • P.O. Box 8835,
4820 BC Breda • The Netherlands
Phone +31 (0)76 544 0588 • Fax +31 (0)76 541 7893

