

Seal Inspector



PRODUCT INFORMATION



WHEN QUALITY CONTROL OF THE SEAL IS KEY...OUR SEAL INSPECTOR WILL TAKE CARE OF YOUR TROUBLE!

In today's world, customers are getting more and more demanding. Quality control is essential in delivering a product that will look perfect towards the customer.

Sealed products have an added dimension; material that is left in between the seal, not only looks bad, it can also compromise the storage life: the seal may not be airtight anymore.

The Seal Inspector checks the seal for intrusion of foreign material and residual material from cutting.

But it doesn't stop with the seal! It will also check if the expiration date has been printed or any special labels are present.

In 2008, DVC introduced the 2nd generation SI with new features which allows inspection of printed seals.

March 2012, the SI 3rd generation is launched:

- ▶ Smaller size, fiber tech housing
- ▶ No calibration required, intuitive learning
- ▶ 2 x resolution 2nd generation SI
- ▶ 20% faster products, 60 M/min.
- ▶ Better barcode detection, all colors (even red and green)

The Seal Inspector (SI) can check the following

- ▶ Seal
- ▶ Presence of expiration date
- ▶ Label(s)
- ▶ Shape
- ▶ Forming
- ▶ Presence of barcode

140 Sealed products/min. 24/7

Since 2004, DVC supplied many first generation Seal Inspector systems. These inspectors have been inspecting 140 packages per minute, 24 hours a day during many years. The seals of these packages are transparent but of different manufacturing processes.



The 2012 Seal Inspector 3rd generation

Seal Inspector

PRODUCT INFORMATION



Specifications

- ▶ 100% inspection of the product
- ▶ Non-contact inspection
- ▶ Up to 180 sealed packages per minute
- ▶ Minimal detectable defects 1 mm²
- ▶ Two-sided inspection of label and seal
- ▶ The Seal Inspector inspects 100% of your production volume with a accuracy better than 1:5000.
- ▶ Option Stainless steel version

Features

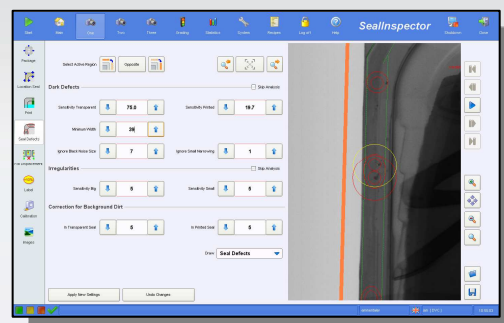
- ▶ Easy installation at existing lines. Equipment needs 760 mm space
- ▶ Height of the belt is 850 mm ± 50 mm
- ▶ Inspection settings adjustable during production
- ▶ Possibility to view all images or only rejects per measurement
- ▶ Possibility to review selected images
- ▶ Try-out settings using review or production images
- ▶ Remote access by VPN, EWON or Teamviewer
- ▶ Access control on various user definable levels
- ▶ Recipes (set of parameters) can be stored and retrieved easily

Benefits

- ▶ 100% inspected products
- ▶ Non-contact inspection
- ▶ Historical production information
- ▶ No return of products
- ▶ Customer satisfaction

Explanation of User Interface

- ▶ Control buttons at the top of the screen
- ▶ Left is Top view of product
- ▶ Right is Bottom view of product
- ▶ The measurement areas are indicated by rectangles and regions of interest (can be switched off)
- ▶ Statistical information at the bottom of the screen



Contact

If you require more information or interested in a demonstration, please contact us at:



- ▶ Telephone : +31 (0)76 54 40 588
- ▶ E-Mail : sales@machinevision.nl
- ▶ Website : www.sealinspector.com