

Basler Cameras

PRODUCT LINE OVERVIEW



USB
VISION

BCON
FOR LVDS

GiGE
VISION

CAMERA
Link
High-Speed Ethernet

FireWire

BASLER
the power of sight

TECHNICAL DETAILS

Area Scan Cameras



| Basler ace | Sensor | Resolution (H×V pixels) | Frame Rate [fps] | Mono/Color | Bit Depth | Interface | Pixel Size [μm ²] | Sensor Size [mm ²] | Optical Size |
|-----------------------------|-------------|-------------------------|------------------|------------|-----------|-----------|-------------------------------|--------------------------------|--------------|
| acA640-90um/uc | ICX424 | 659×494 | 90 | m/c | 8/12 | USB 3.0 | 7.4×7.4 | 4.88×3.66 | 1/3" |
| acA640-120um/uc | ICX618 | 659×494 | 120 | m/c | 8/12 | USB 3.0 | 5.6×5.6 | 3.69×2.77 | 1/4" |
| acA640-750um/uc | PYTHON 300 | 640×480 | 751 | m/c | 8/10 | USB 3.0 | 4.8×4.8 | 3.07×2.30 | 1/4" |
| acA800-510um/uc | PYTHON 500 | 800×600 | 511 | m/c | 8/10 | USB 3.0 | 4.8×4.8 | 3.84×2.88 | 1/3.6" |
| acA1300-30um/uc | ICX445 | 1296×966 | 30 | m/c | 8/12 | USB 3.0 | 3.75×3.75 | 4.86×3.62 | 1/3" |
| acA1300-200um/uc | PYTHON 1300 | 1280×1024 | 203 | m/c | 8/10 | USB 3.0 | 4.8×4.8 | 6.14×4.92 | 1/2" |
| acA1600-20um/uc | ICX274 | 1628×1236 | 20 | m/c | 8/12 | USB 3.0 | 4.4×4.4 | 7.16×5.44 | 1/1.8" |
| acA1920-25um/uc | MT9P031 | 1920×1080 | 25 | m/c | 8/12 | USB 3.0 | 2.2×2.2 | 4.22×2.38 | 1/3.7" |
| acA1920-40um/uc | IMX249 | 1920×1200 | 41 | m/c | 8/12 | USB 3.0 | 5.86×5.86 | 11.25×7.03 | 1/1.2" |
| acA1920-150um/uc | PYTHON 2000 | 1920×1200 | 150 | m/c | 8/10 | USB 3.0 | 4.8×4.8 | 9.50×6.08 | 2/3" |
| acA1920-155um/uc | IMX174 | 1920×1200 | 164 | m/c | 8/12 | USB 3.0 | 5.86×5.86 | 11.25×7.03 | 1/1.2" |
| acA2000-165um/uc | CMV2000 | 2048×1088 | 165 | m/c | 8/12 | USB 3.0 | 5.5×5.5 | 11.26×5.98 | 2/3" |
| acA2000-165umNIR | CMV2000 | 2048×1088 | 165 | m | 8/12 | USB 3.0 | 5.5×5.5 | 11.26×5.98 | 2/3" |
| NEW acA2040-55um/uc | IMX265 | 2048 × 1536 | 55 | m/c | 8/12 | USB 3.0 | 3.45 × 3.45 | 7.07 × 5.30 | 1/1.8" |
| NEW acA2040-120um/uc | IMX252 | 2048 × 1536 | 120 | m/c | 8/12 | USB 3.0 | 3.45 × 3.45 | 7.07 × 5.30 | 1/1.8" |
| acA2040-90um/uc | CMV4000 | 2048×2048 | 90 | m/c | 8/12 | USB 3.0 | 5.5×5.5 | 11.26×11.26 | 1" |
| acA2040-90umNIR | CMV4000 | 2048×2048 | 90 | m | 8/12 | USB 3.0 | 5.5×5.5 | 11.26×11.26 | 1" |
| NEW acA2440-35um/uc | IMX264 | 2448 × 2048 | 35 | m/c | 8/12 | USB 3.0 | 3.45 × 3.45 | 8.45 × 7.07 | 2/3" |
| NEW acA2440-75um/uc | IMX250 | 2448 × 2048 | 75 | m/c | 8/12 | USB 3.0 | 3.45 × 3.45 | 8.45 × 7.07 | 2/3" |
| acA2500-14um/uc | MT9P031 | 2590×1942 | 14 | m/c | 8/12 | USB 3.0 | 2.2×2.2 | 5.70×4.28 | 1/2.5" |
| acA2500-60um/uc | PYTHON 5000 | 2590×2048 | 60 | m/c | 8/10 | USB 3.0 | 4.8×4.8 | 12.44×9.83 | 1" |
| acA3800-14um/uc | MT9J003 | 3856×2764 | 14 | m/c | 8/12 | USB 3.0 | 1.67×1.67 | 6.44×4.62 | 1/2.3" |
| acA4600-10uc | MT9F002 | 4608×3288 | 10 | c | 8/12 | USB 3.0 | 1.4×1.4 | 6.45×4.63 | 1/2.3" |

ace USB 3.0 cameras are available with C or CS-mount (depending on model).

Specifications are subject to change without prior notice.

Latest specifications and availability can be found on our [website www.baslerweb.com/ace](http://www.baslerweb.com/ace). Please visit www.baslerweb.com/manuals for the detailed camera User's Manual and www.baslerweb.com/thirdparty for information on third party software.

NIR = Near Infrared Enhanced

TECHNICAL DETAILS

Area Scan Cameras



| Basler pulse | Sensor | Resolution (H × V pixels) | Frame Rate [fps] | Mono/Color | Bit Depth | Interface | Pixel Size [μm ²] | Sensor Size [mm ²] | Optical Size |
|-----------------|----------|---------------------------|------------------|------------|-----------|-----------|-------------------------------|--------------------------------|--------------|
| puA1280-54um/uc | AR0134 | 1280 × 960 | 54 | m/c | 8/12 | USB 3.0 | 3.75 × 3.75 | 4.80 × 3.60 | 1/3" |
| puA1600-60um/uc | EV76C570 | 1600 × 1200 | 60 | m/c | 8/12 | USB 3.0 | 4.5 × 4.5 | 7.20 × 5.40 | 1/1.8" |
| puA1920-30um/uc | MT9P031 | 1920 × 1080 | 30 | m/c | 8/12 | USB 3.0 | 2.2 × 2.2 | 4.22 × 2.38 | 1/3.7" |
| puA2500-14um/uc | MT9P031 | 2592 × 1944 | 14 | m/c | 8/12 | USB 3.0 | 2.2 × 2.2 | 5.70 × 4.28 | 1/2.5" |

pulse cameras are available with CS-mount.

Specifications are subject to change without prior notice.

Latest specifications and availability can be found on our website www.baslerweb.com/pulse. Please visit www.baslerweb.com/manuals for the detailed camera User's Manual and www.baslerweb.com/thirdparty for information on third party software.

Area Scan Cameras



| Basler dart | Sensor | Resolution (H × V pixels) | Frame Rate [fps] | Mono/Color | Bit Depth | Interface | Pixel Size [μm ²] | Sensor Size [mm ²] | Optical Size |
|-----------------|----------|---------------------------|------------------|------------|-----------|-----------|-------------------------------|--------------------------------|--------------|
| daA1280-54um/uc | AR0134 | 1280 × 960 | 54 | m/c | 8/12 | USB 3.0 | 3.75 × 3.75 | 4.80 × 3.60 | 1/3" |
| daA1600-60um/uc | EV76C570 | 1600 × 1200 | 60 | m/c | 8/12 | USB 3.0 | 4.5 × 4.5 | 7.20 × 5.40 | 1/1.8" |
| daA1920-15um*1 | MT9P031 | 1920 × 1080 | 15 | m | 8/12 | USB 3.0 | 2.2 × 2.2 | 4.22 × 2.38 | 1/3.7" |
| daA1920-30um/uc | MT9P031 | 1920 × 1080 | 30 | m/c | 8/12 | USB 3.0 | 2.2 × 2.2 | 4.22 × 2.38 | 1/3.7" |
| daA2500-14um/uc | MT9P031 | 2592 × 1944 | 14 | m/c | 8/12 | USB 3.0 | 2.2 × 2.2 | 5.70 × 4.28 | 1/2.5" |

dart USB 3.0 cameras are available with S or CS-mount or as a bare board variant without a lens mount.

Specifications are subject to change without prior notice.

Latest specifications and availability can be found on our website www.baslerweb.com/dart. Please visit www.baslerweb.com/manuals for the detailed camera User's Manual and www.baslerweb.com/thirdparty for information on third party software.

*1 Bare board only

Area Scan Cameras



| Basler dart | Sensor | Resolution (H × V pixels) | Frame Rate [fps] | Mono/Color | Bit Depth | Interface | Pixel Size [μm ²] | Sensor Size [mm ²] | Optical Size |
|-----------------|----------|---------------------------|------------------|------------|-----------|---------------|-------------------------------|--------------------------------|--------------|
| daA1280-54bm/bc | AR0134 | 1280 × 960 | 54 | m/c | 8/12 | BCON for LVDS | 3.75 × 3.75 | 4.80 × 3.60 | 1/3" |
| daA1600-60bm/bc | EV76C570 | 1600 × 1200 | 60 | m/c | 8/12 | BCON for LVDS | 4.5 × 4.5 | 7.20 × 5.40 | 1/1.8" |
| daA2500-14bm/bc | MT9P031 | 2592 × 1944 | 14 | m/c | 8/12 | BCON for LVDS | 2.2 × 2.2 | 5.70 × 4.28 | 1/2.5" |

dart BCON cameras are available with S or CS-mount or as a bare board variant without a lens mount.

Specifications are subject to change without prior notice.

Latest specifications and availability can be found on our website www.baslerweb.com/dart. Please visit www.baslerweb.com/thirdparty for information on third party software.

TECHNICAL DETAILS

Area Scan Cameras



| Basler ace | Sensor | Resolution (H×V pixels) | Frame Rate [fps] | Mono/Color | Bit Depth | Interface | Pixel Size [μm ²] | Sensor Size [mm ²] | Optical Size |
|----------------------------|-------------|-------------------------|------------------|------------|-----------|-----------|-------------------------------|--------------------------------|--------------|
| acA640-90gm/gc | ICX424 | 659×494 | 90 | m/c | 8/12 | GigE, PoE | 7.4×7.4 | 4.88×3.66 | 1/3" |
| acA640-120gm/gc | ICX618 | 659×494 | 120 | m/c | 8/12 | GigE, PoE | 5.6×5.6 | 3.69×2.77 | 1/4" |
| acA645-100gm/gc | ICX414 | 659×494 | 100 | m/c | 8/12 | GigE, PoE | 9.9×9.9 | 6.52×4.89 | 1/2" |
| acA640-300gm/gc | PYTHON 300 | 640×480 | 376 | m/c | 8/10 | GigE, PoE | 4.8×4.8 | 3.07×2.30 | 1/4" |
| acA750-30gm/gc | ICX409 | 752×580 | 30 | m/c | 8/12 | GigE, PoE | 6.5×6.25 | 4.89×3.64 | 1/3" |
| acA780-75gm/gc | ICX415 | 782×582 | 75 | m/c | 8/12 | GigE, PoE | 8.3×8.3 | 6.49×4.83 | 1/2" |
| acA800-200gm/gc | PYTHON 500 | 800×600 | 240 | m/c | 8/10 | GigE, PoE | 4.8×4.8 | 3.84×2.88 | 1/3.6" |
| acA1300-22gm/gc | ICX445 | 1296×966 | 22 | m/c | 8/12 | GigE, PoE | 3.75×3.75 | 4.86×3.62 | 1/3" |
| acA1300-30gm/gc | ICX445 | 1296×966 | 30 | m/c | 8/12 | GigE, PoE | 3.75×3.75 | 4.86×3.62 | 1/3" |
| acA1300-75gm/gc | PYTHON 1300 | 1280×1024 | 88 | m/c | 8/10 | GigE, PoE | 4.8×4.8 | 6.14×4.92 | 1/2" |
| acA1280-60gm/gc*1 | EV76C560 | 1280×1024 | 60 | m/c | 8/12 | GigE, PoE | 5.3×5.3 | 6.80×5.40 | 1/1.8" |
| acA1300-60gm/gc*2 | EV76C560 | 1280×1024 | 60 | m/c | 8/12 | GigE, PoE | 5.3×5.3 | 6.80×5.40 | 1/1.8" |
| acA1300-60gmNIR*2 | EV76C661 | 1280×1024 | 60 | m | 8/12 | GigE, PoE | 5.3×5.3 | 6.80×5.40 | 1/1.8" |
| acA1600-20gm/gc | ICX274 | 1626×1236 | 20 | m/c | 8/12 | GigE, PoE | 4.4×4.4 | 7.16×5.44 | 1/1.8" |
| acA1600-60gm/gc | EV76C570 | 1600×1200 | 60 | m/c | 8/12 | GigE, PoE | 4.5×4.5 | 7.20×5.40 | 1/1.8" |
| acA1920-25gm/gc | MT9P031 | 1920×1080 | 25 | m/c | 8/12 | GigE, PoE | 2.2×2.2 | 4.22×2.38 | 1/3.7" |
| acA1920-40gm/gc | IMX249 | 1920×1200 | 42 | m/c | 8/12 | GigE, PoE | 5.86×5.86 | 11.25×7.03 | 1/1.2" |
| acA1920-48gm/gc | PYTHON 2000 | 1920×1200 | 50 | m/c | 8/10 | GigE, PoE | 4.8×4.8 | 9.50×6.08 | 2/3" |
| acA1920-50gm/gc | IMX174 | 1920×1200 | 50 | m/c | 8/12 | GigE, PoE | 5.86×5.86 | 11.25×7.03 | 1/1.2" |
| acA2000-50gm/gc | CMV2000 | 2048×1088 | 50 | m/c | 8/12 | GigE, PoE | 5.5×5.5 | 11.26×5.98 | 2/3" |
| acA2000-50gmNIR | CMV2000 | 2048×1088 | 50 | m | 8/12 | GigE, PoE | 5.5×5.5 | 11.26×5.98 | 2/3" |
| NEW acA2040-35gm/gc | IMX265 | 2048 × 1536 | 36 | m/c | 8/12 | GigE, PoE | 3.45×3.45 | 7.07 × 5.30 | 1/1.8" |
| acA2040-25gm/gc | CMV4000 | 2048×2048 | 25 | m/c | 8/12 | GigE, PoE | 5.5×5.5 | 11.26×11.26 | 1" |
| acA2040-25gmNIR | CMV4000 | 2048×2048 | 25 | m | 8/12 | GigE, PoE | 5.5×5.5 | 11.26×11.26 | 1" |
| NEW acA2440-20gm/gc | IMX264 | 2448 × 2048 | 23 | m/c | 8/12 | GigE, PoE | 3.45×3.45 | 8.45 × 7.07 | 2/3" |
| acA2500-14gm/gc | MT9P031 | 2592×1944 | 14 | m/c | 8/12 | GigE, PoE | 2.2×2.2 | 5.70×4.28 | 1/2.5" |
| acA2500-20gm/gc | PYTHON 5000 | 2590×2048 | 21 | m/c | 8/10 | GigE, PoE | 4.8×4.8 | 12.44×9.83 | 1" |
| acA3800-10gm/gc*1 | MT9J003 | 3856×2764 | 10 | m/c | 8/12 | GigE, PoE | 1.67×1.67 | 6.44×4.62 | 1/2.3" |
| acA4600-7gc*1 | MT9F002 | 4608×3288 | 7 | c | 8/12 | GigE, PoE | 1.4×1.4 | 6.45×4.63 | 1/2.3" |

ace GigE cameras are available with C or CS-mount (depending on model).

Specifications are subject to change without prior notice.

Latest specifications and availability can be found on our [website www.baslerweb.com/ace](http://www.baslerweb.com/ace). Please visit www.baslerweb.com/manuals for the detailed camera User's Manual and www.baslerweb.com/thirdparty for information on third party software.

NIR = Near Infrared Enhanced

*1 rolling shutter *2 global shutter (switchable)

TECHNICAL DETAILS

Area Scan Cameras



| Basler aviator | Sensor | Resolution (H × V pixels) | Frame Rate [fps] | Mono/Color | Bit Depth | Interface | Pixel Size [μm ²] | Sensor Size [mm ²] | Optical Size |
|------------------|-----------|---------------------------|------------------|------------|-----------|-----------|-------------------------------|--------------------------------|--------------|
| avA1000-100gm/gc | KAI-01050 | 1024 × 1024 | 101 | m/c | 8/12 | GigE | 5.5 × 5.5 | 5.63 × 5.63 | 1/2" |
| avA1600-50gm/gc | KAI-02050 | 1600 × 1200 | 55 | m/c | 8/12 | GigE | 5.5 × 5.5 | 8.80 × 6.60 | 2/3" |
| avA1900-50gm/gc | KAI-02150 | 1920 × 1080 | 51 | m/c | 8/12 | GigE | 5.5 × 5.5 | 10.56 × 5.94 | 2/3" |
| avA2300-25gm/gc | KAI-04050 | 2330 × 1750 | 26 | m/c | 8/12 | GigE | 5.5 × 5.5 | 12.85 × 9.64 | 1" |

aviator cameras are available with C-mount.

Specifications are subject to change without prior notice.

Latest specifications and availability can be found on our [website www.baslerweb.com/aviator](http://www.baslerweb.com/aviator). Please visit www.baslerweb.com/manuals for the detailed camera User's Manual and www.baslerweb.com/thirdparty for information on third party software.

Area Scan Cameras



| Basler pilot | Sensor | Resolution (H × V pixels) | Frame Rate [fps] | Mono/Color | Bit Depth | Interface | Pixel Size [μm ²] | Sensor Size [mm ²] | Optical Size |
|-----------------|----------|---------------------------|------------------|------------|-----------|-----------|-------------------------------|--------------------------------|--------------|
| piA640-210gm/gc | KAI-0340 | 648 × 488 | 210 | m/c | 8/12 | GigE | 7.4 × 7.4 | 4.80 × 3.61 | 1/3" |
| piA1000-48gm/gc | KAI-1020 | 1004 × 1004 | 48 | m/c | 8/12 | GigE | 7.4 × 7.4 | 7.43 × 7.43 | 2/3" |
| piA1000-60gm/gc | KAI-1020 | 1004 × 1004 | 60 | m/c | 8/12 | GigE | 7.4 × 7.4 | 7.43 × 7.43 | 2/3" |
| piA1600-35gm/gc | KAI-2020 | 1608 × 1208 | 35 | m/c | 8/12 | GigE | 7.4 × 7.4 | 11.90 × 8.94 | 1" |
| piA1900-32gm | KAI-2093 | 1928 × 1084 | 32 | m | 12 | GigE | 7.4 × 7.4 | 14.21 × 8.02 | 1" |
| piA2400-17gm/gc | ICX625 | 2456 × 2058 | 17 | m/c | 8/12 | GigE | 3.45 × 3.45 | 8.47 × 7.10 | 2/3" |

pilot cameras are available with C-mount.

Specifications are subject to change without prior notice.

Latest specifications and availability can be found on our [website www.baslerweb.com/pilot](http://www.baslerweb.com/pilot). Please visit www.baslerweb.com/manuals for the detailed camera User's Manual and www.baslerweb.com/thirdparty for information on third party software.

Area Scan Cameras



| Basler scout | Sensor | Resolution (H × V pixels) | Frame Rate [fps] | Mono/Color | Bit Depth | Interface | Pixel Size [μm ²] | Sensor Size [mm ²] | Optical Size |
|-----------------|---------|---------------------------|------------------|------------|-----------|-----------|-------------------------------|--------------------------------|--------------|
| scA640-70gm/gc | ICX424 | 659 × 494 | 70 | m/c | 8/12 | GigE | 7.4 × 7.4 | 4.88 × 3.66 | 1/3" |
| scA640-74gm/gc | ICX414 | 659 × 494 | 79 | m/c | 8/12 | GigE | 9.9 × 9.9 | 6.52 × 4.89 | 1/2" |
| scA640-120gm/gc | ICX618 | 659 × 494 | 122 | m/c | 8/12 | GigE | 5.6 × 5.6 | 3.69 × 2.77 | 1/4" |
| scA750-60gm/gc | MT9V022 | 752 × 480 | 64 | m/c | 8 | GigE | 6.0 × 6.0 | 4.51 × 2.88 | 1/3" |
| scA780-54gm/gc | ICX415 | 782 × 582 | 55 | m/c | 8/12 | GigE | 8.3 × 8.3 | 6.49 × 4.83 | 1/2" |
| scA1300-32gm/gc | ICX445 | 1296 × 966 | 32 | m/c | 8/12 | GigE | 3.75 × 3.75 | 4.86 × 3.62 | 1/3" |
| scA1390-17gm/gc | ICX267 | 1392 × 1040 | 17 | m/c | 8/12 | GigE | 4.65 × 4.65 | 6.47 × 4.84 | 1/2" |
| scA1400-17gm/gc | ICX285 | 1392 × 1040 | 17 | m/c | 8/12 | GigE | 6.45 × 6.45 | 8.98 × 6.71 | 2/3" |
| scA1400-30gm/gc | ICX285 | 1392 × 1040 | 30 | m/c | 8/12 | GigE | 6.45 × 6.45 | 8.98 × 6.71 | 2/3" |
| scA1600-14gm/gc | ICX274 | 1628 × 1236 | 14 | m/c | 8/12 | GigE | 4.4 × 4.4 | 7.16 × 5.44 | 1/1.8" |
| scA1600-28gm/gc | ICX274 | 1628 × 1236 | 28 | m/c | 8/12 | GigE | 4.4 × 4.4 | 7.16 × 5.44 | 1/1.8" |

scout cameras are available with C-mount.

Specifications are subject to change without prior notice.

Latest specifications and availability can be found on our [website www.baslerweb.com/scout](http://www.baslerweb.com/scout). Please visit www.baslerweb.com/manuals for the detailed camera User's Manual and www.baslerweb.com/thirdparty for information on third party software.

TECHNICAL DETAILS

Area Scan Cameras



| Basler ace | Sensor | Resolution (H x V pixels) | Frame Rate [fps] | Mono/Color | Bit Depth | Interface | Pixel Size [μm^2] | Sensor Size [mm^2] | Optical Size |
|------------------|---------|---------------------------|------------------|------------|-----------|-----------------|--------------------------------|-------------------------------|--------------|
| acA2000-340km/kc | CMV2000 | 2048 x 1088 | 340 | m/c | 8/10/12 | CL (full), PoCL | 5.5 x 5.5 | 11.26 x 5.98 | 2/3" |
| acA2000-340kmNIR | CMV2000 | 2048 x 1088 | 340 | m | 8/10/12 | CL (full), PoCL | 5.5 x 5.5 | 11.26 x 5.98 | 2/3" |
| acA2040-180km/kc | CMV4000 | 2048 x 2048 | 180 | m/c | 8/10/12 | CL (full), PoCL | 5.5 x 5.5 | 11.26 x 11.26 | 1" |
| acA2040-180kmNIR | CMV4000 | 2048 x 2048 | 180 | m | 8/10/12 | CL (full), PoCL | 5.5 x 5.5 | 11.26 x 11.26 | 1" |

ace Camera Link cameras are available with C-mount.

Specifications are subject to change without prior notice.

Latest specifications and availability can be found on our [website www.baslerweb.com/ace](http://www.baslerweb.com/ace). Please visit www.baslerweb.com/manuals for the detailed camera User's Manual and www.baslerweb.com/thirdparty for information on third party software.

NIR = Near Infrared Enhanced

Area Scan Cameras



| Basler aviator | Sensor | Resolution (H x V pixels) | Frame Rate [fps] | Mono/Color | Bit Depth | Interface | Pixel Size [μm^2] | Sensor Size [mm^2] | Optical Size |
|------------------|-----------|---------------------------|------------------|------------|-----------|-----------|--------------------------------|-------------------------------|--------------|
| avA1000-120km/kc | KAI-01050 | 1024 x 1024 | 120 | m/c | 8/10/12 | CL (base) | 5.5 x 5.5 | 5.63 x 5.63 | 1/2" |
| avA1600-65km/kc | KAI-02050 | 1600 x 1200 | 67 | m/c | 8/10/12 | CL (base) | 5.5 x 5.5 | 8.80 x 6.60 | 2/3" |
| avA1900-60km/kc | KAI-02150 | 1920 x 1080 | 62 | m/c | 8/10/12 | CL (base) | 5.5 x 5.5 | 10.56 x 5.94 | 2/3" |
| avA2300-30km/kc | KAI-04050 | 2330 x 1750 | 31 | m/c | 8/10/12 | CL (base) | 5.5 x 5.5 | 12.85 x 9.64 | 1" |

aviator Camera Link cameras are available with C-mount.

Specifications are subject to change without prior notice.

Latest specifications and availability can be found on our [website www.baslerweb.com/aviator](http://www.baslerweb.com/aviator). Please visit www.baslerweb.com/manuals for the detailed camera User's Manual and www.baslerweb.com/thirdparty for information on third party software.

Area Scan Cameras



| Basler beat | Sensor | Resolution (H x V pixels) | Frame Rate [fps] | Mono/Color | Bit Depth | Interface | Pixel Size [μm^2] | Sensor Size [mm^2] | Optical Size |
|--------------|--------------------|---------------------------|------------------|------------|-----------|-----------|--------------------------------|-------------------------------|--------------|
| beA4000-62km | CMOSIS CMV12000 | 4096 x 3072 | 62 | m | 8/10/12 | CL (full) | 5.5 x 5.5 | 22.53 x 16.90 | 1.75" |
| beA4000-62kc | CMOSIS CMV12000 | 4088 x 3070 | 62 | c | 8/10/12 | CL (full) | 5.5 x 5.5 | 22.53 x 16.90 | 1.75" |

Basler beat cameras are available with F-, M42 x 1-, M58 x 0,75-, M42 x 0,75-mount.

Specifications are subject to change without prior notice.

Latest specifications and availability can be found on our [website www.baslerweb.com/beat](http://www.baslerweb.com/beat). Please visit www.baslerweb.com/manuals for the detailed camera User's Manual and www.baslerweb.com/thirdparty for information on third party software.

TECHNICAL DETAILS

Area Scan Cameras



| Basler scout | Sensor | Resolution (H×V pixels) | Frame Rate [fps] | Mono/Color | Bit Depth | Interface | Pixel Size [μm ²] | Sensor Size [mm ²] | Optical Size |
|-----------------|---------|-------------------------|------------------|------------|-----------|------------|-------------------------------|--------------------------------|--------------|
| scA640-70fm/fc | ICX424 | 659×494 | 71 | m/c | 8/12 | IEEE 1394b | 7.4×7.4 | 4.88×3.66 | 1/3" |
| scA640-74fm/fc | ICX414 | 659×494 | 74 | m/c | 8/12 | IEEE 1394b | 9.9×9.9 | 6.52×4.89 | 1/2" |
| scA640-120fm/fc | ICX618 | 659×494 | 122 | m/c | 8/12 | IEEE 1394b | 5.6×5.6 | 3.69×2.77 | 1/4" |
| scA750-60fm/fc | MT9V022 | 752×480 | 64 | m/c | 8 | IEEE 1394b | 6.0×6.0 | 4.51×2.88 | 1/3" |
| scA780-54fm/fc | ICX415 | 782×582 | 54 | m/c | 8/12 | IEEE 1394b | 8.3×8.3 | 6.49×4.83 | 1/2" |
| scA1000-30fm/fc | ICX204 | 1034×779 | 30 | m/c | 8/12 | IEEE 1394b | 4.65×4.65 | 4.81×3.62 | 1/3" |
| scA1300-32fm/fc | ICX445 | 1296×966 | 32 | m/c | 8/12 | IEEE 1394b | 3.75×3.75 | 4.81×3.62 | 1/3" |
| scA1390-17fm/fc | ICX267 | 1392×1040 | 17 | m/c | 8/12 | IEEE 1394b | 4.65×4.65 | 6.47×4.84 | 1/2" |
| scA1400-30fm/fc | ICX285 | 1392×1040 | 30 | m/c | 8/12 | IEEE 1394b | 6.45×6.45 | 8.98×6.71 | 2/3" |
| scA1600-14fm/fc | ICX274 | 1628×1236 | 14 | m/c | 8/12 | IEEE 1394b | 4.4×4.4 | 7.16×5.44 | 1/1.8" |
| scA1600-28fm/fc | ICX274 | 1628×1236 | 28 | m/c | 8/12 | IEEE 1394b | 4.4×4.4 | 7.16×5.44 | 1/1.8" |

scout cameras are available with C-mount.

Specifications are subject to change without prior notice.

Latest specifications and availability can be found on our [website www.baslerweb.com/scout](http://www.baslerweb.com/scout). Please visit www.baslerweb.com/manuals for the detailed camera User's Manual and www.baslerweb.com/thirdparty for information on third party software.

Line Scan Cameras



| Basler racer | Sensor | Resolution | Line Rate [kHz] | Mono/Color | Bit Depth | Interface | Pixel Size [μm ²] | Sensor Length [mm] |
|--------------|------------|------------|-----------------|------------|-----------|-----------|-------------------------------|--------------------|
| raL2048-48gm | DR-2k-7 | 2048 | 51 | m | 8/12 | GigE | 7.0×7.0 | 14.3 |
| raL4096-24gm | DR-4k-7 | 4096 | 26 | m | 8/12 | GigE | 7.0×7.0 | 28.7 |
| raL6144-16gm | DR-6k-7 | 6144 | 17 | m | 8/12 | GigE | 7.0×7.0 | 43.0 |
| raL8192-12gm | DR-8k-3.5 | 8192 | 12 | m | 8/12 | GigE | 3.5×3.5 | 28.7 |
| raL12288-8gm | DR-12k-3.5 | 12288 | 8 | m | 8/12 | GigE | 3.5×3.5 | 43.0 |

racer cameras are available with C-, F-, M42 x 1-, M42 x 0.75-mount.

Specifications are subject to change without prior notice.

Latest specifications and availability can be found on our [website www.baslerweb.com/racer](http://www.baslerweb.com/racer). Please visit www.baslerweb.com/manuals for the detailed camera User's Manual and www.baslerweb.com/thirdparty for information on third party software.

Line Scan Cameras



| Basler runner | Sensor | Resolution | Line Rate [kHz] | Mono/Color | Bit Depth | Interface | Pixel Size [μm ²] | Sensor Length [mm] |
|---------------|----------|------------|-----------------|------------|-----------|-----------|-------------------------------|--------------------|
| ruL2098-10gc | KLI-2113 | 3×2098 | 9.2 | c | 8/12 | GigE | 14.0×14.0 | 29.37 |

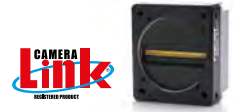
runner cameras are available with F-mount.

Specifications are subject to change without prior notice.

Latest specifications and availability can be found on our [website www.baslerweb.com/runner](http://www.baslerweb.com/runner). Please visit www.baslerweb.com/manuals for the detailed camera User's Manual and www.baslerweb.com/thirdparty for information on third party software.

TECHNICAL DETAILS

Line Scan Cameras



| Basler racer | Sensor | Resolution | Line Rate [kHz] | Mono/Color | Bit Depth | Interface | Pixel Size [μm^2] | Sensor Length [mm] |
|---------------|------------|------------|-----------------|------------|-----------|------------------|--------------------------------|--------------------|
| raL2048-80km | DR-2k-7 | 2048 | 80 | m | 8/10/12 | CL* ¹ | 7.0×7.0 | 14.3 |
| raL4096-80km | DR-4k-7 | 4096 | 80 | m | 8/10/12 | CL* ² | 7.0×7.0 | 28.7 |
| raL6144-80km | DR-6k-7 | 6144 | 80 | m | 8/10/12 | CL (full) | 7.0×7.0 | 43.0 |
| raL8192-80km | DR-8k-3.5 | 8192 | 80 | m | 8/10/12 | CL (full) | 3.5×3.5 | 28.7 |
| raL12288-66km | DR-12k-3.5 | 12288 | 66 | m | 8/10/12 | CL (full) | 3.5×3.5 | 43.0 |

racer cameras are available with C-, F-, M42 x 1-, M42 x 0.75-mount.

Specifications are subject to change without prior notice.

Latest specifications and availability can be found on our website www.baslerweb.com/racer. Please visit www.baslerweb.com/manuals for the detailed camera User's Manual and www.baslerweb.com/thirdparty for information on third party software.

*¹CL (base), PoCL, *²CL (medium), PoCL

Line Scan Cameras



| Basler sprint | Sensor | Resolution | Line Rate [kHz] | Mono/Color | Bit Depth | Interface | Pixel Size [μm^2] | Sensor Length [mm] |
|------------------------------|----------------|------------|-----------------|------------|-----------|------------------|--------------------------------|--------------------|
| spL2048-39kc | Dual Line CMOS | 2048 | 38.6 | c | 8/10/12 | CL (base) | 10.0×10.0 | 20.48 |
| spL2048-50km/kc | Dual Line CMOS | 2048 | 50 | m/c | 8/10/12 | CL* ¹ | 10.0×10.0 | 20.48 |
| spL2048-70km/kc | Dual Line CMOS | 2048 | 70 | m/c | 8/10/12 | CL* ¹ | 10.0×10.0 | 20.48 |
| spL2048-140km | Dual Line CMOS | 2048 | 140 | m | 8/10/12 | CL (b/m/f) | 10.0×10.0 | 20.48 |
| spL4096-39km/kc | Dual Line CMOS | 4096 | 38.6 | m/c | 8/10/12 | CL (b/m/f) | 10.0×10.0 | 40.96 |
| spL4096-50km/kc | Dual Line CMOS | 4096 | 50 | m/c | 8/10/12 | CL (b/m/f) | 10.0×10.0 | 40.96 |
| spL4096-70km/kc | Dual Line CMOS | 4096 | 70 | m/c | 8/10/12 | CL (b/m/f) | 10.0×10.0 | 40.96 |
| spL4096-140km/kc | Dual Line CMOS | 4096 | 140 | m/c | 8/10/12 | CL (b/m/f) | 10.0×10.0 | 40.96 |
| spL8192-39kc | Dual Line CMOS | 8192 | 38.6 | c | 8/10/12 | CL (b/m/f) | 10.0×10.0 | 81.92 |
| spL8192-39kcCI* ² | Dual Line CMOS | 8192 | 38.6 | c | 8/10/12 | CL (b/m/f) | 10.0×10.0 | 81.92 |
| spL8192-50km | Dual Line CMOS | 8192 | 50 | m | 8/10/12 | CL (b/m/f) | 10.0×10.0 | 81.92 |
| spL8192-70km | Dual Line CMOS | 8192 | 70 | m | 8/10/12 | CL (b/m/f) | 10.0×10.0 | 81.92 |

sprint cameras are available with F-, V- or M42 x 1-mount (depending on model).

Specifications are subject to change without prior notice.

Latest specifications and availability can be found on our website www.baslerweb.com/sprint. Please visit www.baslerweb.com/manuals for the detailed camera User's Manual and www.baslerweb.com/thirdparty for information on third party software.

*¹Mono: base, Color: base/medium/full, *² with Color Improvement Feature, without Line Stamp Feature

Line Scan Cameras



| Basler Line Scan | Sensor | Resolution | Line Rate [kHz] | Mono/Color | Bit Depth | Interface | Pixel Size [μm^2] | Sensor Length [mm] |
|------------------|----------------|------------|-----------------|------------|-----------|-----------|--------------------------------|--------------------|
| L301k/kc | Tri-linear CCD | 3×2098 | 9.2 | m/c | 8/10 | CL (base) | 14.0×14.0 | 29.37 |
| L304k/kc | Tri-linear CCD | 3×4080 | 7.2 | m/c | 8/10 | CL (base) | 10.0×10.0 | 40.80 |

L300 cameras are available with F- or M58 x 0.75-mount (depending on model).

Specifications are subject to change without prior notice.

Latest specifications and availability can be found on our website www.baslerweb.com/L300. Please visit www.baslerweb.com/manuals for the detailed camera User's Manual and www.baslerweb.com/thirdparty for information on third party software.

TECHNICAL DETAILS

3D Cameras



| Basler ToF Camera | Sensor | Resolution | Frame Rate [fps] | Mono/Color | Type | Interface | Accuracy | Working Range |
|------------------------|-----------|------------|------------------|------------|------|-----------|-----------|---------------|
| Engineering Sample ToF | Panasonic | 640 x 480 | 20 | m | NIR | GigE | +/- 1 cm* | 0 m to 13 m |

Specifications are subject to change without prior notice.

Latest specifications and availability can be found on our website www.baslerweb.com/tof. Please visit www.baslerweb.com/manuals for the detailed camera User's Manual and www.baslerweb.com/thirdparty for information on third party software.

*Scene dependent: in a range of 0.5 m to 5.8 m, based on a flat white target with over 90% reflectivity, in a room with zero ambient light at 22°C, in factory settings mode, looking at the center of the range image.

IP Cameras



| IP Fixed Box | Sensor | Resolution | Max. Frame Rate [fps] | Interface | Pixel Size [μm^2] | Optical Size | Video Compression | Lens Mount | Day/Night |
|------------------|--------|------------|-----------------------|---------------|--------------------------------|--------------|----------------------|-------------------|-----------------------|
| BIP2-640c | CCD | 640×480 | 95 | Fast Ethernet | 5.60×5.60 | 1/4" | MJPEG, MPEG-4, H.264 | CS-mount, DC iris | --- |
| BIP2-640c-dn | CCD | 640×480 | 95 | Fast Ethernet | 5.60×5.60 | 1/4" | MJPEG, MPEG-4, H.264 | CS-mount, DC iris | Movable IR-cut filter |
| BIP2-1000c | CCD | 1024×768 | 30 | Fast Ethernet | 4.65×4.65 | 1/3" | MJPEG, MPEG-4, H.264 | CS-mount, DC iris | --- |
| BIP2-1000c-dn | CCD | 1024×768 | 30 | Fast Ethernet | 4.65×4.65 | 1/3" | MJPEG, MPEG-4, H.264 | CS-mount, DC iris | Movable IR-cut filter |
| BIP2-1300c | CCD | 1280×960 | 30 | Fast Ethernet | 3.75×3.75 | 1/3" | MJPEG, MPEG-4, H.264 | CS-mount, DC iris | --- |
| BIP2-1300c-dn | CCD | 1280×960 | 30 | Fast Ethernet | 3.75×3.75 | 1/3" | MJPEG, MPEG-4, H.264 | CS-mount, DC iris | Movable IR-cut filter |
| BIP2-1600c | CCD | 1600×1200 | 12.5 | Fast Ethernet | 4.40×4.40 | 1/1.8" | MJPEG, MPEG-4, H.264 | CS-mount, DC iris | --- |
| BIP2-1600c-dn | CCD | 1600×1200 | 12.5 | Fast Ethernet | 4.40×4.40 | 1/1.8" | MJPEG, MPEG-4, H.264 | CS-mount, DC iris | Movable IR-cut filter |
| BIP2-1600-25c | CCD | 1600×1200 | 25 | Fast Ethernet | 4.40×4.40 | 1/1.8" | MJPEG, MPEG-4, H.264 | CS-mount, DC iris | --- |
| BIP2-1600-25c-dn | CCD | 1600×1200 | 25 | Fast Ethernet | 4.40×4.40 | 1/1.8" | MJPEG, MPEG-4, H.264 | CS-mount, DC iris | Movable IR-cut filter |
| BIP2-1280c | CMOS | 1280×720 | 30 | Fast Ethernet | 3.30×3.30 | 1/3" | MJPEG, MPEG-4, H.264 | CS-mount, DC iris | --- |
| BIP2-1280c-dn | CMOS | 1280×720 | 30 | Fast Ethernet | 3.30×3.30 | 1/3" | MJPEG, MPEG-4, H.264 | CS-mount, DC iris | Movable IR-cut filter |
| BIP2-1920c | CMOS | 1920×1080 | 30 | Fast Ethernet | 2.20×2.20 | 1/3" | MJPEG, MPEG-4, H.264 | CS-mount, DC iris | --- |
| BIP2-1920c-dn | CMOS | 1920×1080 | 30 | Fast Ethernet | 2.20×2.20 | 1/3" | MJPEG, MPEG-4, H.264 | CS-mount, DC iris | Movable IR-cut filter |
| BIP2-1920-30c | CMOS | 1920×1080 | 30 | Fast Ethernet | 5.86×5.86 | 1/1.3" | MJPEG, MPEG-4, H.264 | C-mount, DC iris | --- |
| BIP2-2500c | CMOS | 2560×1920 | 15 (3 MP) | Fast Ethernet | 2.20×2.20 | 1/2.5" | MJPEG, MPEG-4, H.264 | CS-mount, DC iris | --- |
| BIP2-2500c-dn | CMOS | 2560×1920 | 15 (3 MP) | Fast Ethernet | 2.20×2.20 | 1/2.5" | MJPEG, MPEG-4, H.264 | CS-mount, DC iris | Movable IR-cut filter |

Specifications are subject to change without prior notice.

Latest specifications and availability can be found on our www.baslerweb.com/box. Please visit www.baslerweb.com/manuals for the detailed camera User's Manual and www.baslerweb.com/thirdparty for information on third party software.

TECHNICAL DETAILS

Basler PowerPack

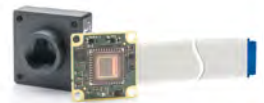


| Microscopy | Sensor | Resolution (H×V pixels) | Frame Rate [fps] | Mono/Color | Dynamic Range [dB] | Interface | Pixel Size [μm ²] | Active Area [mm] | Optical Size |
|-------------------------------------|------------------|-------------------------|------------------|------------|--------------------|-----------|-------------------------------|------------------|--------------|
| Microscopy pulse 1.2MP | Aptina | 1280×960 | 54 | c | 64 | USB 3.0 | 3.75×3.75 | 6.00 | 1/3" |
| Microscopy pulse 2.0MP | Aptina | 1920×1080 | 30 | c | 70.1 | USB 3.0 | 2.20×2.20 | 4.85 | 1/3.7" |
| Microscopy pulse 3.3MP | Aptina | 2048×1584 | 20 | c | 70.1 | USB 3.0 | 2.20×2.20 | 5.7 | 1/3" |
| Microscopy pulse 5.0MP | Aptina | 2592×1944 | 14 | c | 70.1 | USB 3.0 | 2.20×2.20 | 7.13 | 1/2.5" |
| Microscopy ace 1.3MP 48 | Sony PREGIUS | 1280×1024 | 48 | c | 73 | USB 3.0 | 5.86×5.86 | 9.60 | 1/1.8" |
| NEW Microscopy ace 1.3MP 145 | ON Semiconductor | 1280×1024 | 145 | c | 56.2 | USB 3.0 | 4.80×4.80 | 7.90 | 1/2" |
| NEW Microscopy ace 1.3MP 200 | ON Semiconductor | 1280×1024 | 200 | m | 56.3 | USB 3.0 | 4.80×4.80 | 7.90 | 1/2" |
| Microscopy ace 2.3 MP | Sony PREGIUS | 1920×1200 | 82 | c | 73 | USB 3.0 | 5.86×5.86 | 13.30 | 1/1.2" |
| NEW Microscopy ace 3.2 MP | Sony PREGIUS | 2048×1536 | 55 | c | 71.4 | USB 3.0 | 3.45×3.45 | 9.00 | 1/1.8" |
| NEW Microscopy ace 5.1 MP | Sony PREGIUS | 2448×2048 | 35 | c | 70.6 | USB 3.0 | 3.45×3.45 | 11.20 | 2/3" |

Basler Microscopy ace cameras are available with C-mount. Basler Microscopy pulse cameras are available with CS-mount, and are delivered with a CS- to C-mount adapter ring.

The Basler Microscopy Cameras are the centerpiece of Basler's PowerPack for Microscopy which delivers all the necessary components for a straightforward setup and easy installation, including the Basler Microscopy Software for camera control, image acquisition, processing, analysis and documentation. These cameras cannot be ordered separately from the Basler PowerPack for Microscopy. For more information please visit www.baslerweb.com/MicroscopyPowerPack

Basler PowerPack



| Embedded Vision | Camera | Interface | Sensor | Resolution (HxV pixels) | Frame Rate [fps] | Mono/Color | Lens | Processing Board |
|--|--------------|---------------|---------|-------------------------|------------------|------------|----------------------------------|-------------------------|
| Basler PowerPack dart USB for Evaluation | daA2500-14uc | USB 3.0 | MT9P031 | 2592x1944 | 14 | c | Evetar M12B0816W F1,6 f8 mm, 1/2 | - |
| NEW Basler PowerPack for Embedded Vision (BCON) | daA2500-14bc | BCON for LVDS | MT9P031 | 2592x1944 | 14 | c | Evetar M12B0816W F1,6 f8 mm, 1/2 | AVNET 7010 MicroZed SOM |

All PowerPacks come with a suitable cable and our free pylon camera software suite. The Basler PowerPack for Embedded Vision includes an additional processing board.

Specifications are subject to change without prior notice. Latest specifications and availability can be found on our website www.baslerweb.com/EPP. Please visit www.baslerweb.com/thirdparty for information on third party software.

BASLER'S COMPONENTS

Basler's Components Enhance Your Vision

Basler offers you extensively tested cables and lenses, which are optimized for use with our Basler cameras. Our cooperation with certified suppliers facilitates the operation of a high-performance image processing system.

An image processing system needs more than just a camera, lens and light source. A stable vision system also requires accessories for handling data transfer.

Basler offers a wide variety of accessories such as lenses, I/O cables, power supplies, data cables, host adapter cards, hubs or switches designed to help you get the most out of your camera. To ensure full compatibility, all accessories are tested with our cameras. Cables and power supplies are all EMC tested for industrial conditions by our support team.

Basler Original Equipment



The accessories market for machine vision cameras is broad and deep. Therefore, Basler offers products specially developed for our cameras, meaning camera and lens or cables harmonize perfectly with one another. The products are

produced exclusively for us and are available only from Basler. All products with the Basler Original Equipment seal allow top performance when combined with Basler cameras.

Why Components from Basler?

- Perfect match with our Basler cameras
- Extensive and qualified portfolio
- One-stop-shopping for your image processing system
- Performance stability through premium quality standards
- Qualified selection of components avoids changes in existing systems
- Professional consultancy during preselection

USB 3.0 Accessories from Basler

Especially with a USB 3.0 interface, it is important to think about the right accessories to achieve stability in a system with one or more cameras. In particular USB 3.0 accessories from the consumer sector may lead to major disadvantages for the user, as they are not designed to handle the higher demands of machine vision applications.

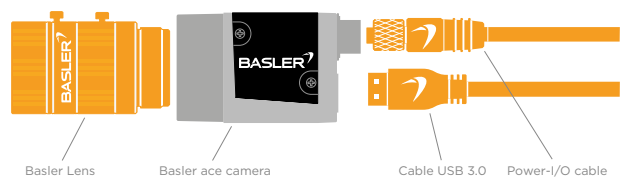
Our portfolio of USB 3.0 accessories covers a broad selection of cables, host adapter cards and a USB 3.0 hub.

Your Benefits Through USB 3.0 Accessories:

- High stability of your USB 3.0 set up
- Simple integration into all image processing applications
- Tested USB 3.0 accessories with reliable premium quality for industrial applications
- Carefully selected accessories for a perfect match
- Plug and play functionality

Have a look at the matching components for your camera model at www.baslerweb.com/accessories

Typical set-up of a camera system:



BASLER'S COMPONENTS

Basler Lenses

Get perfectly proportioned performance with Basler Lenses

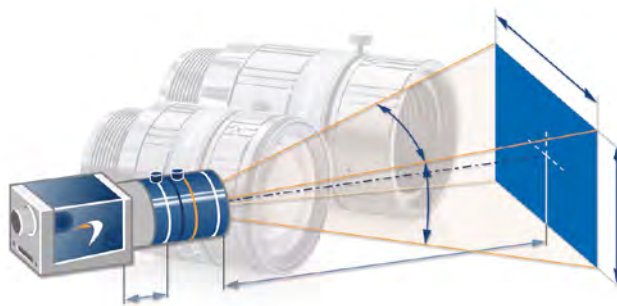
Trends in sensor technology have moved to CMOS with smaller sensor sizes. Only Basler offers lenses that are optimally designed for cameras with sensors sized of $\leq 1/2"$. The sensor size our new lens series is optimized for is $1/2.5"$ (7.3 mm) – a range which accommodates nearly every standard machine vision application. Basler Lenses have a diameter of just 29 mm – affording you the same space efficiency of the ace camera. Best of all, they set a new standard in terms of price-performance ratio, starting at just € 99.

Need help selecting the right lens for your application?

Our Lens Selector makes it easy to search for the right lens for your Basler area scan camera. The Lens Selector is built around a complex set of calculations, but from the user standpoint it is remarkably easy to use: Visitors to www.baslerweb.com/lens-selector can enter the pertinent data for their application (such as necessary angle of view, working distance, object size, etc.). The Lens Selector then calculates the necessary focal length and proposes suitable lenses for the size and resolution of the sensor.

The benefits of Basler Lenses at a glance:

- 5 Megapixel lens – optimized for $1/2.5"$ sensors with resolution of $2.2 \mu\text{m}$ [230 lp/mm]
- The extreme high resolution of 5 MP allows for razor-sharp images
- Extraordinary price/performance ratio, starting from € 99
- Optimally suited for standard machine vision applications
- Designed in cooperation with Fujinon
- Best match for latest sensor technology with small pixel pitch
- Basler Lenses are perfect for Basler ace, dart and pulse cameras



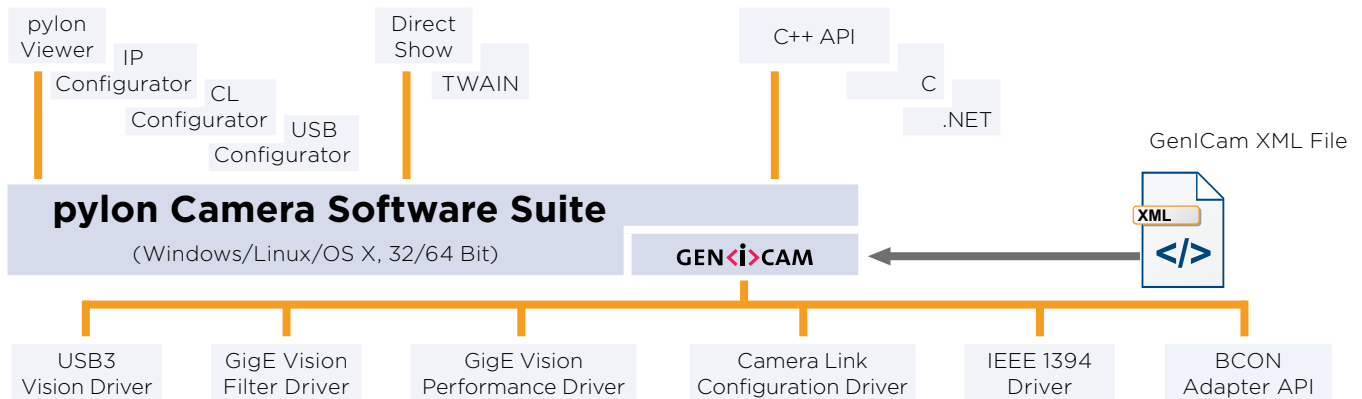
| Basler Lenses | C125-0418-5M | C125-0618-5M | C125-0818-5M | C125-1218-5M | C125-1620-5M | C125-2522-5M |
|---------------------------|-----------------|--------------|--------------|--------------|--------------|--------------|
| Maximum image circle | 1/2.5" (7.3 mm) | | | | | |
| Mount | C-mount | | | | | |
| Focal Length | 4 mm | 6 mm | 8 mm | 12 mm | 16 mm | 25 mm |
| Maximum relative aperture | 1:1.8 | | | 1:2.0 | | 1:2.2 |

Specifications are subject to change without prior notice. Latest specifications can be found on www.baslerweb.com/manuals.

For availability please refer to our website www.baslerweb.com/lenses

Basler pylon Camera Software Suite

The pylon Camera Software Suite operates with all Basler line scan and area scan cameras - no matter what interface they use. It offers stable, reliable and flexible data exchange between Basler cameras and PCs, for Windows and Linux on x86 as well as on ARM based systems and OS X – at a very low CPU load.



The architecture of the pylon Camera Software Suite is based on GenICam Technology, which offers you easy access to the newest camera models and the latest features. Changes to an existing camera device in your application essentially become a plug-and-play process.

An easy-to-use set of tools lets you configure the camera's interface. Use the **pylon Viewer** to set camera parameters, to capture and display images, and to evaluate the camera.

The pylon **USB3 Vision Driver** fully supports the USB3 Vision standard. It allows Basler USB 3.0 cameras to use the full speed and bandwidth of USB 3.0 for image transmission while reducing resource load and using off-the-shelf hardware components.

The **pylon GigE Vision Drivers** quickly separate incoming packets carrying image data from other traffic on the network and make the data available for use by your vision application while requiring the lowest CPU resources.

The pylon **IEEE 1394b Driver** gives you access to a well-established interface technology, and the pylon **Camera Link Configuration Driver** offers comfortable access to all camera parameters of Basler's latest Camera Link families ace, aviator, and racer.

The **BCON Adapter API** allows easy implementation

of an adapter to communicate with the systems I²C interface. A ready to use sample adapter implementation is also provided.

The pylon Camera Software Suite also contains a powerful SDK that supports any type of application development. The pylon package contains the following main modules. Each one can be individually selected/unselected during the installation process, preventing the installation of unneeded modules on your system:

- USB3 Vision Driver
- GigE Vision Filter Driver
- GigE Vision Performance Driver
- IEEE 1394 Driver
- BCON Adapter API
- Camera Link Serial Communication Driver
- pylon Viewer
- SDK for all cameras; C, C++, .NET (C#, VB.NET, ...); the 'pylon for Linux' version only supports the GigE and USB 3.0 interface via a C++ API

The pylon Camera Software Suite can be downloaded for free at www.baslerweb.com/pylon. For more information on the installation process, refer to the pylon Installation Guide. The helpful pylon Release Notes contain all improvements and bug fixes since the first pylon version.

BASLER WORLDWIDE

We maintain a worldwide network of subsidiaries, offices and distributors to ensure that Basler customers always have a knowledgeable contact person in their area.

North, Middle, South America

6 Basler, Inc. USA
Exton (Subsidiary)
Tel. +1 610 280 0171
sales.usa@baslerweb.com

7 Basler Office Canada
Toronto
Rob Karimi
Tel. +1 484 840 7214
rob.karimi@baslerweb.com

Europe, Middle East, Africa

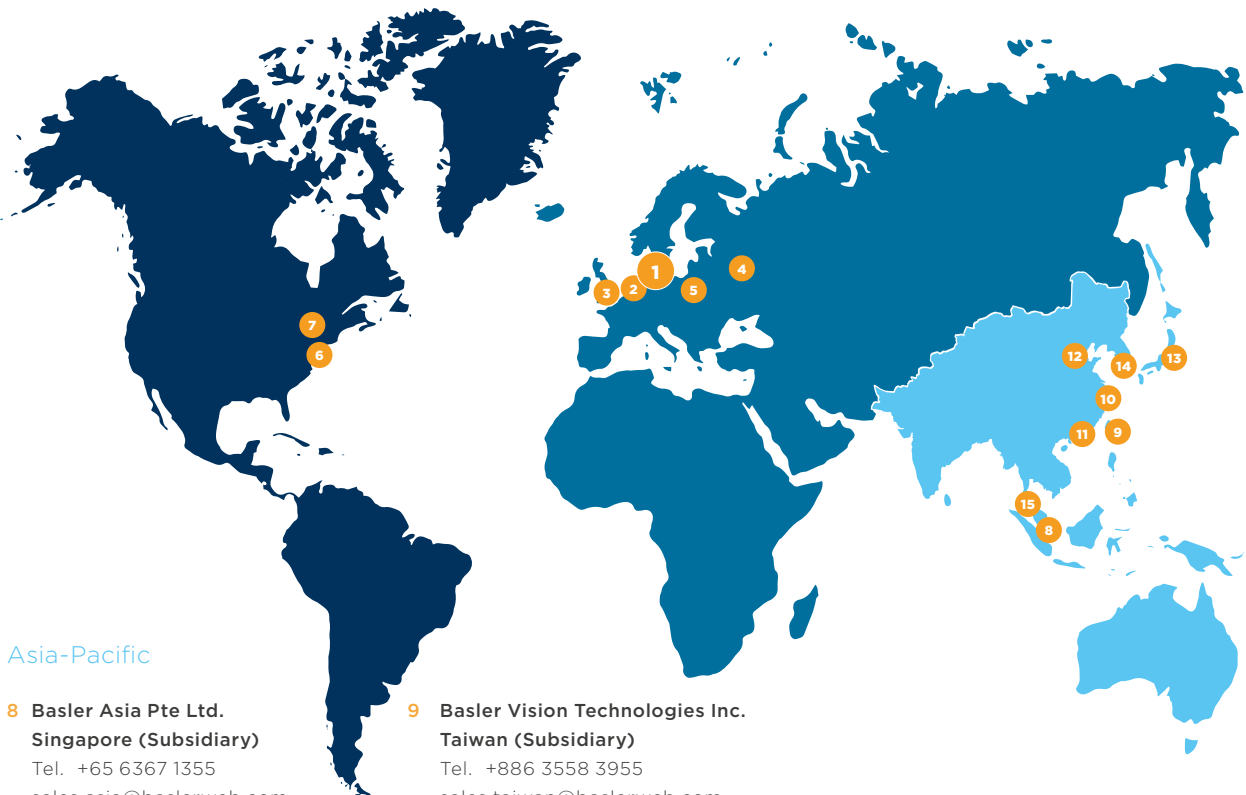
1 Basler AG Headquarters
Germany, Ahrensburg
Tel. +49 4102 463 500
sales.europe@baslerweb.com

2 Basler Office Benelux
Cor Valk
Tel. +31 6 83 99 20 56
cor.valk@baslerweb.com

3 Basler Office UK & IRL
Reading
Mark Williams
Tel. +44 7868 844 808
mark.williams@baslerweb.com

4 Basler Office RU, BY & UA
Chernogolovka
Victor Egorov
Tel. +7 916 813 39 83
victor.egorov@baslerweb.com

5 Basler Office PL, CZ & SK
Warsaw
Michal Wasilewski
Tel. +48 504 990 494
michal.wasilewski@baslerweb.com



Asia-Pacific

8 Basler Asia Pte Ltd.
Singapore (Subsidiary)
Tel. +65 6367 1355
sales.asia@baslerweb.com

9 Basler Vision Technologies Inc.
Taiwan (Subsidiary)
Tel. +886 3558 3955
sales.taiwan@baslerweb.com

10 Basler China
Shanghai (Representative Office)
Tel. +86 21 6230 2160
sales.china@baslerweb.com

11 Basler Office China
Shenzhen
Tel. +86 186 8031 6909
sales.china@baslerweb.com

12 Basler Office China
Beijing
Tel. +86 108 588 6917
sales.china@baslerweb.com

13 Basler Japan
Tokyo (Representative Office)
Tel. +81 3 6402 4350
sales.japan@baslerweb.com

14 Basler Korea
Seoul (Representative Office)
Tel. +82 707 1363 114
sales.korea@baslerweb.com

15 Basler Office Malaysia
Penang
Tel. +60 124 237 089
sales.malaysia@baslerweb.com

OTHER INFORMATION

How Does Basler Measure and Define Image Quality?



Basler is leading the effort to standardize image quality and sensitivity measurement for cameras and sensors. We are giving the EMVA 1288 standard our strongest support because it describes a unified method to measure, compute, and present the specification parameters for cameras and image sensors. Our cameras are characterized and measured in 100% compliance with the EMVA 1288 standard. Measurement reports can be downloaded from our website.

How Does Basler Ensure Superior Quality and Reliable High Performance?

Our approach to quality assurance is rigorous: we continually audit all facets of our business to ensure powerful performance, increase efficiency and reduce costs for our customers. We are compliant with all major quality standards including ISO 9001, CE, RoHS, and more. To ensure consistently high product quality, we employ several quality inspection procedures during manufacturing.

Every Basler camera is subjected to exhaustive optical and mechanical tests before leaving the factory. We have developed a unique combination of optics, hardware, and software tools that can quickly and efficiently calibrate a camera and measure its performance against a set of standard performance criteria. Regardless of what technology or camera model you choose you can be assured of consistent performance.

3-Year Warranty

Basler offers a 3-year warranty for their cameras and Basler Lenses. We make this unprecedented promise because we have unparalleled confidence in our products. We continually reinvest in research, development and superior manufacturing capabilities so that our customers can fully rely on the products we manufacture.

About Basler

Founded in 1988, Basler is a leading global manufacturer of high quality digital cameras and lenses for factory automation, medical & life sciences, retail and traffic applications. The company employs 500 people at its headquarters in Ahrensburg, Germany and subsidiaries in the United States and Asia.

Basler's portfolio of products offers customers the vision industry's widest selection of industrial and network cameras as well as lenses. Today it includes some 300 camera models - and it's still growing. We're committed to developing technology that drives business results for our customers: cameras and lenses that are easy to use, easy to integrate, and deliver an exceptional price/performance ratio.



Basler AG Germany, Headquarters

